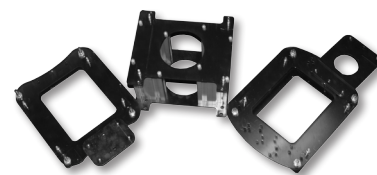




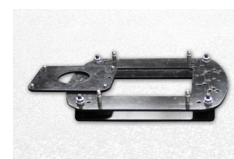
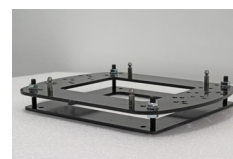
## Basement Components for eyevis omniSHAPES



### ) LIST OF AVAILABLE VERSIONS & COMPONENTS

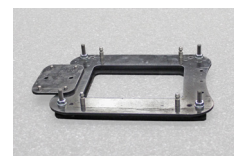
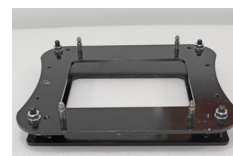
#### 1. OSH-BSM-STD (Art. Nr. 17016)

Standard basement for omniSHAPES  
 4:3 (rectangular) and pentagonal shapes (transfer shapes)  
 Levelling feet with 4x set screws M10x60 mm mounting plate 6 mm,  
 incl. 4x location bolts 10 mm zinc-plated and connection element (weight 7kg)



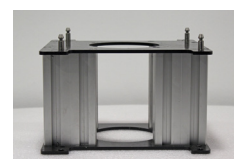
#### 2. OSH-BSM-HEX (Art. Nr. 17017)

Basement for hexagonal omniSHAPES  
 Levelling feet with 4x set screws M10x60 mm mounting plate 6 mm,  
 incl. 4x location bolts 10 mm zinc-plated and connection element (weight 6kg)



#### 3. OSH-BSM-Spacer-180 (Art. Nr. 17018)

Intermediate basement for hexagonal omniSHAPES or elevation  
 Intermediate basement 180 mm  
 300 x 400 mm, zinc-plated (weight 8.5kg)



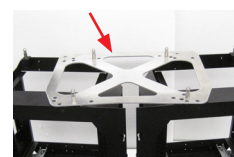
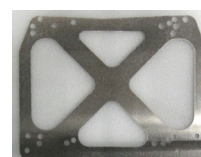
#### 4. OSH-CON-HEX (Art. Nr. 17019)

Connection element for omniSHAPES  
 Hexagon-to-Hexagon or Hexagon-to-Pentagon  
 3 mm steel, 2x folded, zinc-plated (weight 0.7kg)



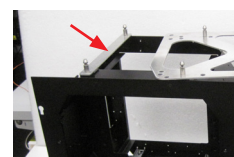
#### 5. OSH-CON-STD (Art. Nr. 17020)

Format plate for omniSHAPE connection  
 3 mm thick, size 300 x 400 mm  
 Uncoated aluminium (weight 0.5kg)



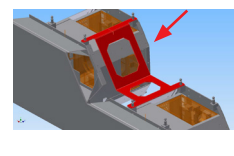
#### 6. OSH-CON-BAR (Art. Nr. 17021)

Format bar for omniSHAPES to level the used OSH-CON-STD  
 3 mm thick  
 Uncoated aluminium (weight 0.05kg)



#### 7. OSH-CON-STEP (Art. Nr. 17133)

Connection element for omniSHAPES „rectangular to rectangular“ or „rectangular to one corner cut off“ with height difference of 180mm  
 3 mm steel, 2x folded, zinc-plated (weight 1.2kg)





**Basement Components for eyevis omniSHAPES**

) EXAMPLE CONFIGURATION

Art. No.:

- #17016
- #17017
- #17018
- #17019
- #17020
- #17021
- #17133

