



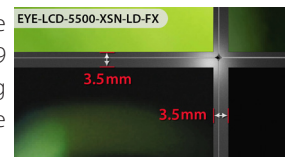
# EYE-LCD-5500-XSN-LD-FX

55" VIDEO WALL LCD WITH 3.5 mm BEZEL  
AND DIRECT-LED BACKLIGHT



## ) PRODUCT DESCRIPTION

The EYE-LCD-5500-XSN-LD-FX is an extremely-super narrow bezel video wall LCD by eyevis. With this new display type, the mechanical bezel in a video wall adds up to 3.5 mm. The new video wall displays provide a screen diagonal of 55 inch (139 cm) with full HD resolution (1920x1080 px). The newly developed electronics offer an optionally activatable non-sticking mode which in prevents burn-in effects or image sticking effects caused by the prolonged representation of static image content.



## ) INNOVATIVE FEATURES

### 4K Loop-Through

The new internal matrix scaler of the displays enables a loop-through of signals with up to 4K resolution.

### Simple Firmware Updates

The firmware of the displays can easily be updated. All displays within a video wall can be updated at once.

### Reliable 24/7 Operation

All components designed for professional use in long-term operation.

### Durable and Professional Design

All metal structure, sleek & low-key look that makes the content stand out.

### Landscape or Portrait Installation

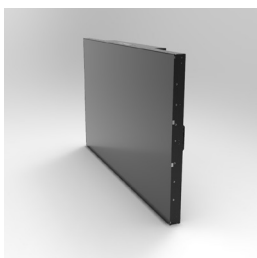
### Non-Stick Mode (optionally activatable)

To reduce potential image sticking effects three different mechanisms are built in and can be activated via OSD:

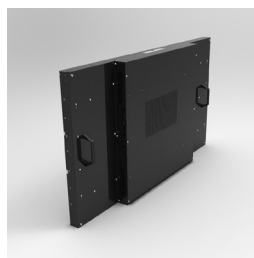
- **Pixel Shifting** constantly moves the entire image by one pixel.
- The intelligent **Soft Picture Mode** smoothens extreme contrast transitions to avoid boundary line image sticking.
- **Dynamic Pixel Refreshing** randomly changes individual pixels for a very short time so that it is not visible for the human eye at all but reduces the risk of image retention through static images considerably.

The Non-Stick Mode can be activated for static content and deactivated for motion content.

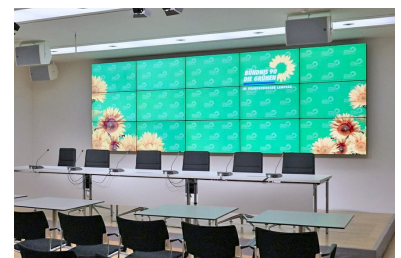
## ) IMAGES



Front View

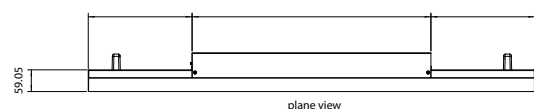
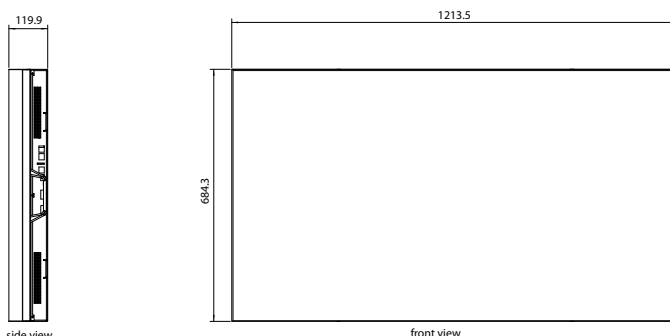


Rear View



Application

## ) DRAWING



Unit: mm



## EYE-LCD-5500-XSN-LD-FX

55" VIDEO WALL LCD WITH 3.5 mm BEZEL AND DIRECT-LED BACKLIGHT

### ) TECHNICAL SPECIFICATION

#### LCD PANEL

|                               |   |
|-------------------------------|---|
| Model Name:                   | EYE-LCD-5500-XSN-LD-FX                      |
| Panel Type:                   | a-Si TFT                                    |
| Screen Diagonal:              | 55 inch (ca. 139 cm)                        |
| Active Display Area:          | 1209.6 × 680.4 mm                           |
| Installation:                 | Landscape or Portrait Installation possible |
| Display Mode:                 | Transmissive mode, normally black           |
| Display Resolution:           | 1,920 × 1,080 Pixel (full HD)               |
| Colours:                      | 1.07G (10-Bit Colour Processing)            |
| Brightness:                   | 500 cd/m <sup>2</sup> (typ.)                |
| Contrast:                     | 1400 : 1 (typ.)                             |
| Viewing Angle:                | 178° H/V                                    |
| Response Time:                | 12 ms                                       |
| Backlight:                    | Direct LED                                  |
| Backlight Life-Time:          | > 60,000 hrs (Luminance <50%)               |
| System MTBF:                  | > 60,000 hrs                                |
| 24/7 Operation <sup>1</sup> : | Yes   |

#### CONNECTORS & CONTROL

|                        |  |
|------------------------|--|
| Inputs <sup>2</sup> :  | Video, Y/C, DVI-I (digital/analog), HDMI, DisplayPort, RS232 |
| Outputs <sup>2</sup> : | DisplayPort, RS232   |
| Internal Matrix:       | Yes, 10 × 10   |

#### MECHANICAL

|              |  |
|--------------|--|
| Display:     | 1213.5 × 684.3 × 119.9 mm (W × H × D)                  |
| Bezel Width: | Bezel-to-Bezel: 1.25 mm bottom/right, 2.25 mm top/left |
| Weight:      | 34 kgs   |
| VESA Mount:  | 400 × 600  |

#### OPERATING CONDITIONS

|                        |                                   |
|------------------------|-----------------------------------|
| Power Consumption:     | ca. 210 Watt (max.)               |
| Input Voltage:         | 100V – 240V AC, 50/60 Hz          |
| Operating Temperature: | typ. 0 – 40 °C                    |
| Humidity:              | typ. 10-80 % RH (no condensation) |

#### OTHER

|           |  |
|-----------|--|
| Handling: | Handles for simple and safe transport and installation |
| Cooling:  | Low-noise fans   |

#### OPTIONS

|                       |  |
|-----------------------|--|
| OPS Slot:             | OPS standardized input slot for OPS-PC and additional inputs |
| Front-Service Option: | Full front-service Landscape/Portrait video wall mount       |
| Colour Adjustment:    | EYE-LCD-CAS colour adjustment system                         |
| Touch:                | Custom infrared touch overlay for video walls                |

#### ORDERING INFORMATION

|              |       |
|--------------|-------|
| Item Number: | 21321 |
|--------------|-------|

<sup>1</sup> When observing required terms and condition of operation

<sup>2</sup> Possible for signals up to 4K if supported by the signal source/graphic card on output side

### ) THE ADVANTAGES AT A GLANCE

- 55" screen diagonal (ca. 139 cm)
- Full HD resolution (1,920 × 1,080 Pixel)
- Bezel-to-Bezel: 3.5 mm
- Direct LED backlight for uniform illumination and brilliant colours
- Optimised power consumption
- Internal matrix function for signals and control
- Robust metal design for demanding applications

### ) APPLICATIONS

- Control Rooms (e.g. for Video Surveillance)
- Board Rooms
- Show Rooms
- Conference Rooms
- POS/POI
- Trade Fairs / Events
- Trading Rooms

### ) OPTIONAL ACCESSORIES

#### OPS MODULE

##### Features:

- OPS-standard compliant eyevisProcessingUnit embedded in the device. The powerful EPU-versions can be used as digital signage players or to integrate the display device in eyevis' unique MetaWall concept for IP-based signal distribution and control

#### HD<sub>BASE</sub>T MODULE

##### Features:

- Use of Cat5e/Cat6 Ethernet cable with standard RJ-45 connector for video/audio/control/power transmission.

#### 3G-SDI MODULE

##### Features:

- Internal 3G/HD/SD-SDI Board
- Supported 3G formats (SMPTE 424M) 1080p@50/60Hz
- Looping out to other display
- Easy Install (Intel OPS Architecture Compliant)

#### FRONT-SERVICE WALL MOUNT



EYE-WHLCD-FS-QR-65-LAND  
for Landscape installations



EYE-WHLCD-FS-QR-65-POR  
for Portrait installations



#### eyevis GmbH

Hundschleeerstrasse 23 • 72766 Reutlingen • Germany  
Phone: + 49 (0) 7121 43303 - 0 • Fax: + 49 (0) 7121 43303 - 22  
www.eyevis.de • info@eyevis.de

As at: 19.03.2015 / V1.3 • Subject to change!

All trademarks and registered trademarks are the property of their respective owners. Copyright © 2015 eyevis GmbH. All rights reserved.